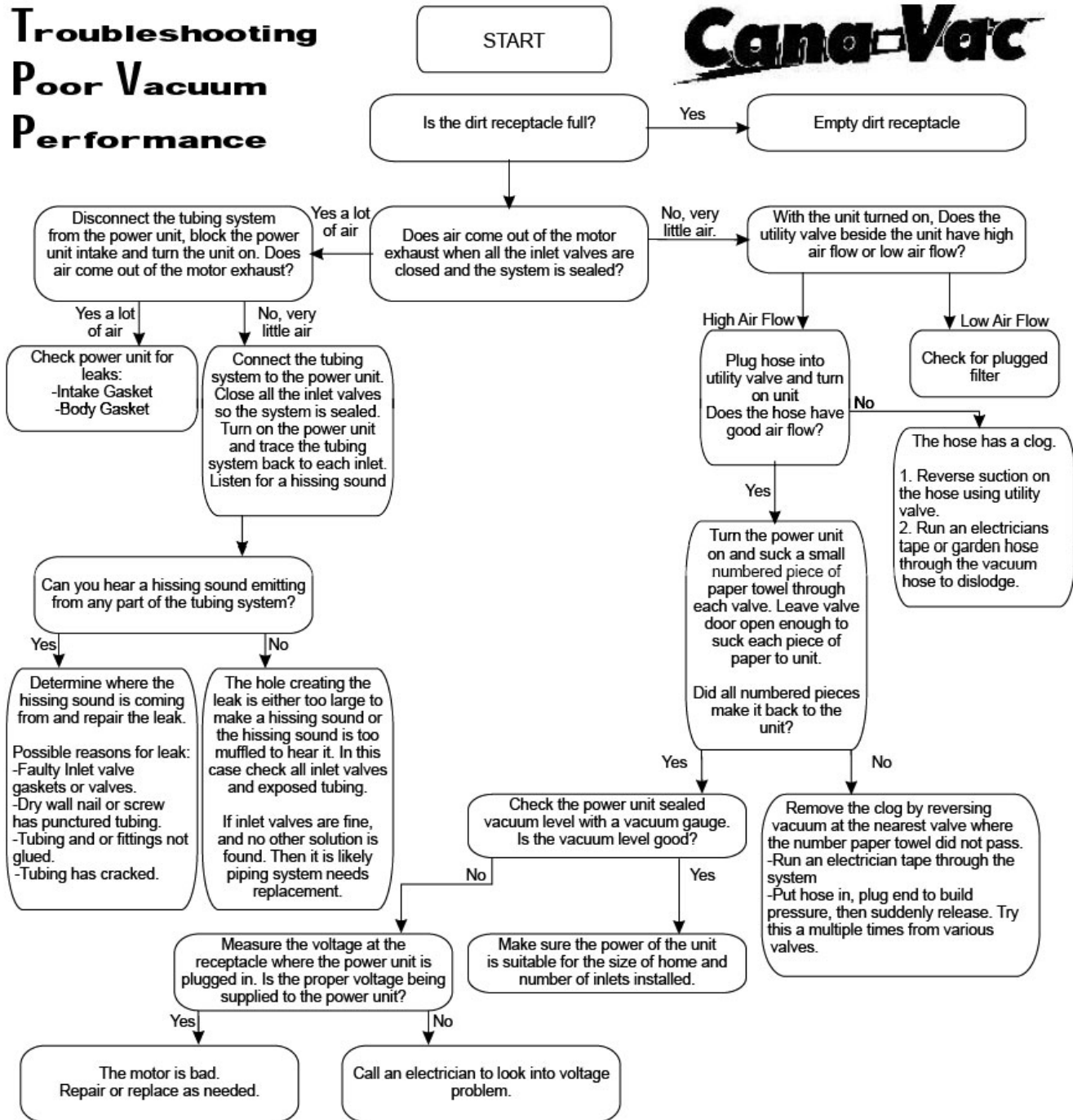


# Troubleshooting Poor Vacuum Performance



## Dealing With Blockages and Reduced Air Flow in a Cana-Vac System:

- A. Reverse vacuum from various valves (This usually works)
- B. Isolate where the blockage is by vacuuming numbered paper towels through each valve.
- C. Blockages usually occur at a "T" or "Wye" intersection. Check to make sure they are not installed incorrectly creating gravity drops.
- D. Run an electricians tape through the system.
- E. Build pressure by blocking hose then suddenly releasing it for a sudden burst of air.
- F. Inspect filter for damage. Make sure filter is not plugged.
- G. Make sure all fittings and pipe are glued properly.
- H. Make sure unit cannister is secure and empty of debris.
- I. Check all accessories, wands, power brushes and hoses for possible blockages. If blockage is in a hose reverse vacuum on the hose or uses a electricians tape to remove blockage.

# Troubleshooting Cana-Vac Electrical Problems

